



Volunteer Profile



Steve Rowe

At six feet and six, with a booming voice and a snow white Fu Manchu moustache, Steve Rowe is an imposing figure who cannot be missed!

Steve is a self taught bridge player. He first learned to play by watching the engineers' lunchtime bridge game at Fort Carson, Colorado, when he was in the service in the early 1970's. He had always (and still continues) to read the bridge column in the newspaper so he understood the game but needed experience. Later Steve started playing in the pick-up bridge games during lunch in the Crypto room of NORAD in the Cheyenne Mountain complex in Colorado Springs.

Steve worked as a steam plant mechanic who "fixed machines

Table Talk

4782 PACIFIC COAST HIGHWAY
LONG BEACH, CA 90804
562.498.8113

EMAIL: MANAGER@LONGBEACHBRIDGE.COM
WWW.LONGBEACHBRIDGE.COM
FACEBOOK, INSTAGRAM: LONGBEACHBRIDGE.

Special Events – February 2020

Saturday, 1

ACBL-wide Fund Game

\$2 extra for card fees

81.8% Sectional-Rated

Sunday, 2

Monday- Sunday, 3-9

11:00 a.m. Start - Super Bowl

Club Championship

Regular card fees

63.6% Sectional Rated Black

Sunday, 9

Team Game

Sean Lui Directing

Monday-Sunday, 10-16

Education Foundation Week

\$1 extra

63.8% Sectional-Rated Black

Monday, 17

Birthday Monday

\$5 for February Birthdays

Saturday, 22

Steve's Picnic Lunch

and made electricity" for the Los Angeles Department of Water and Power. A coworker took him to the Wild Whist Bridge Club in Westwood where he was introduced to duplicate bridge. He was hooked! In 1997 Steve broke his ankle at work and, due to a "golden handshake" offer, was able to retire in 1998. This allowed him to start playing bridge **FULL TIME!**

Steve found Long Beach Bridge by looking it up in the telephone book. Freda Kensington was the owner/director at the time, and she paired him with his first duplicate bridge partner, Jeanne Vivian. Steve now plays five days a week with a variety of partners. John Crabtree

was his first A-player partner, and they're still playing together every Thursday for over 19 years!

Steve's advice to new players is "learn defense which requires good card sense because it is the most important part of the game. Signaling is very important too." He likes to use Bergen raises and plays all conventions except Lebenshol.


Steve became a director about six years ago. He decided to "give it a shot" as he needed a new challenge. He liked it and decided to do it again! Now Steve directs every other Friday and all Tuesdays and Saturdays. "Directing is fun,"

Continued on Page 2

**Calling All Players
with Less Than 20
Master Points**





Join us Wednesday nights at 7:00 p.m. for a 12-board sanctioned game. Yes, you can ask questions and even use your notes. Bring a partner or come solo. Singles, please arrive early so we can find you a partner. The game usually finishes by 9:30 p.m.



January Status Changes

New Member	Nancy Sheley
Club Master	Rick Gonser
Life Master	Judy Lorber
Bronze Life Master	Judy Lorber
Silver Life Master	William H. Smith
Ruby Life Master	Sherry Troeger

Judy Lorber

Nancy Sheley

January Birthdays



Left to right. Lois Mullen, John Crabtree, Mark Tang, Kim Wang

Continued from Page 1

he added, “as are the players most of the time.” When asked for one thing no one knows about him, he laughingly replied, “I’ll never tell.”

Steve instituted his monthly Saturday picnic lunches after the club stopped regularly serving lunch a few years ago. Initially helped by his granddaughter and now by his 17-year-old grandson AJ, Steve serves a feast of hot dogs, baked beans, green salad, and potato salad. He even added a non-meat pasta dish for the vegetarian players.

Join Steve on the 3rd and 5th Saturdays of the month! The food is yummy! As Steve says to his partners when they lay down their dummy, “Thanks, that’s very nice.” Thank you, Steve, for treating us to these Saturday picnics. That’s *very* nice!

By Lillian Slater



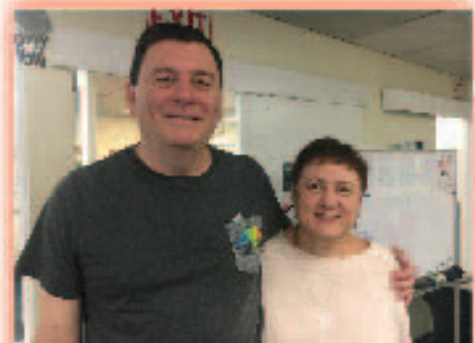
Jo and John Melis met at Long Beach Bridge, have been married for 42 years, and still play together once a week.



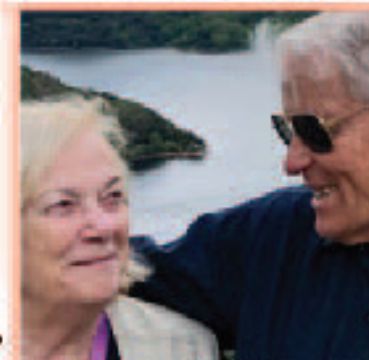
Mike and Karen McKittrick say sometimes the ride home is very quiet.



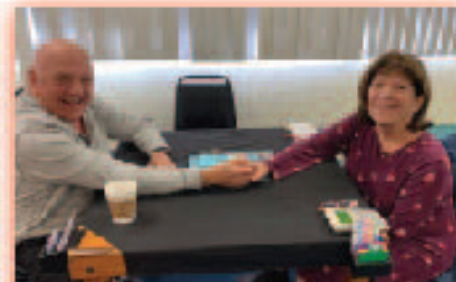
Like a good husband, Dick Buhl says his wife, Joan, is always right.



Ilan and Lucille Rotstein say playing bridge keeps their brain young.



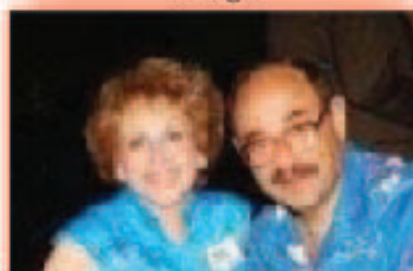
Richard's family taught Jackie Hess how to play bridge.



Jerry and Melanie Smith like to play games together.



Rita Vanlierop started bridge with her identical twin sister then realized her husband Jan would love it.



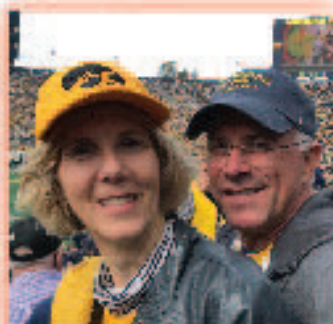
In 1962 Barbara Olschwang was stuck 31 miles away from home on winter break and bored. The bridge-playing girl across the street was not available but Alan was. More than 57 years later, they are still playing bridge together.



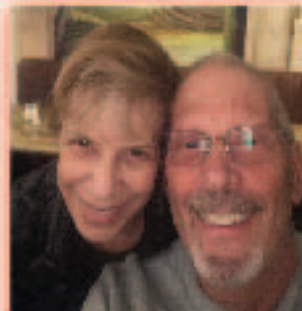
Suzie and John Hand have played together since 1964.



Jerry and Jane Reid play every Friday at Leisure World.



Chuck and Ardie Laine say playing bridge taught them to argue.



Fern and Hank Dunbar played exclusively with each other until they achieved Life Master in 5 years.



Steve Ramos taught their son how to play bridge. When Sharon Biederman retired, she decided to join in on the fun.

Couples we didn't catch include:
April & John Berg
Jane & Darrel Manson
Elsa & Richard Morgan
Robin & Roger White
Others?



Thank You for Choosing Long Beach Bridge Center

By Nancy Aasen Toussaint

As my flight drew to a close, the flight attendant announced, "We know you have many choices, thank you for flying with XXX Airlines. We hope you will fly with us again." That got me to thinking about bridge clubs. In Southern California we are fortunate to have many club choices. So I brainstormed about why a bridge player chooses a particular club (our club!).

Let's look at a bunch of possible reasons.

Location: Sometimes a club is simply the closest in miles or easiest freeway accessible. But sometimes a player will drive extra miles to attend their preferred club.

Playing Time: Some players will only play daytimes games or if not retired, can only play evening or weekend games. Maybe a particular day of the week fits into a schedule best. Long Beach has a lot of playing choices, but there are other clubs around with various game days and times as well.

Facilities: The Long Beach club has ample parking and an adequate elevator in its favor. We've spruced up our game rooms over the past years. I think the bright table covers that Jo Melis sewed are an asset to our rooms. We are anticipating kitchen and bathroom remodeling soon. That will certainly help.

Favorite Director: We have a good variety of directors.

Food: Nice, but I am not sure outstanding enough to sway a fence sitter to choose Long Beach Bridge Center over another club in the area.

Classes/Lessons: In this category I think Sharon and her team of volunteers are doing an outstanding job!

Advertising: Hmmm, I am not aware of any club advertising much. We are all equally listed on the ACBL website. Maybe our registry with the OLLI program gives us a leg up.

Reputation/Friendliness: I think this might be the biggest influencing factor. There is a club in the area (which will remain unnamed) that has the reputation of being unfriendly. For that reason alone, I will not give it a try. We need to keep a friendly reputation. When I am playing North I try to remember to smile and say, "Welcome to table X" to the incoming East/West and introduce myself and my partner if I don't know them. It always gets a positive smile and starts the round on a friendly note. It's a much nicer way to start instead of just looking down, picking up your cards, counting them, and laying down a bid. If there is time, make a little small talk to add human touch and personal interest. If someone is brand new to our club, let them know where the tea and coffee is, that there



**Diamond Life Master
John Melis**

John celebrates his new status with his bridge wives, Colleen Gardner and Kay Tseng

Table Talk

Table Talk is distributed monthly. It is emailed to members of Long Beach Bridge with paper copies available at the club.

Editor	Ardie Laine
Contributors	Lillian Slater
	Nancy Toussaint
Photographers	Colleen Gardner
	Ardie Laine
	Steve Ramos
	Lillian Slater

Article Submissions

We welcome articles, ideas, and photos pertaining to our club. We reserve the right to revise submissions. Contact Ardie at ardeaux1@gmail.com



will be an ice cream break halfway through, etc. Most importantly let them know it is nice to meet them and you hope they come back. "We know you have choices, thank you for choosing the Long Beach Bridge Club."